

**Fifth-Wheel-Steer Trailers**

**Capacity Range  
up to 5,000 lbs.**



**FW4365**  
Steel frame, hardwood deck.



**FM4370**  
All steel construction.



**QUALITY FEATURES**

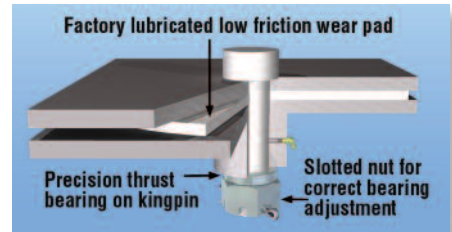
- Engineered for power towing. Drop forged loop handle standard, rear pintle hitch optional extra.
- 14" square fifth wheel features low friction wear pad and 1 1/4" precision thrust bearing.
- Choice of 12" or 16" diameter wheels rolling on 1" steel axles.
- Precision tapered roller bearings standard in all wheels.

**UNIQUE SPECIFICATIONS**

**FW4365** has 1" hardwood deck set flush in 1/4" steel angle frame with reinforcing steel center longitudinal.

**FM4370** has smooth 12 gauge steel deck welded to steel channel frame and reinforcing steel center longitudinal.

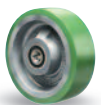
**FIFTH WHEEL CONSTRUCTION**



To order, specify model number and suffix.

**Trailer Selection Table**

**WHEEL CHOICES** for more help, see pages 14 & 15



**Duralast®:**  
95A poly on iron – our standard urethane



**Moldon Rubber:**  
1" thick 70D rubber, tensile strength exceeds 1,000 psi



**Pneumatic Rubber tires:**  
Rubber tread



**Poly-Soft®:**  
85A softer poly on iron – quieter, easy rolling, debris resistant urethane

Platform Size Inches	SELECTION SUFFIX					Approx. Weight Lbs.
	Wheels 12" dia., deck height 19"			Wheels 16" dia., deck height 24"		
	Moldon Rubber 12" x 3"†	Duralast® 12" x 3"	Poly-Soft® 12" x 3"	Moldon Rubber 16" x 3"	6-ply Pneumatic Tires 4.80-8†	
36 x 60	-12RT3660	-DT3660	-SPT3660	-16RT3660	-PRT3660	360
36 x 72	-12RT3672	-DT3672	-SPT3672	-16RT3672	-PRT3672	375
36 x 84	-12RT3684	-DT3684	-SPT3684	-16RT3684	-PRT3684	390
36 x 96	-12RT3696	-DT3696	-SPT3696	-16RT3696	-PRT3696	585
42 x 84	-12RT4284	-DT4284	-SPT4284	-16RT4284	-PRT4284	420
42 x 96	-12RT4296	-DT4296	-SPT4296	-16RT4296	-PRT4296	450
48 x 84	-12RT4884	-DT4884	-SPT4884	-16RT4884	-PRT4884	450
48 x 96	-12RT4896	-DT4896	-SPT4896	-16RT4896	-PRT4896	480

† 12" x 3" Moldon Rubber and Pneumatic tires limit capacity to 4,500 lbs. Consult factory for solid pneumatic tires which have higher capacity rating.