

Energy

Load Rating (ea.): 600 – 23,000 lbs.

To kick production in high gear, Hamilton designs and manufactures durable casters and wheels to support production for companies primarily focused on the exploration and development of renewable and non-renewable energy.

Industries & Applications:

- Oil & Gas Reserves, Drilling & Refining
- Hydroelectric Power
- Energy – oil & gas
- Nuclear Power
- Natural Gas
- Wind & Solar Power Generation



Spinfinity® Workhorse (ZFWH)

Load Rating (ea.): 600 - 2500 lbs.

- Maintenance-free
- 2" wheel widths
- 5" x 4" mounting plate



Spinfinity® Heavy Service (ZFHS)

Load Rating (ea.): 600 - 2800 lbs.

- Maintenance-free
- Wheel Diameters: 4" - 8"
- 4-1/2" x 6-1/2" mounting plate



Spinfinity® ForgeMaster (ZFFM)

Load Rating (ea.): 1600 - 3200 lbs.

- Maintenance-free
- 3" wheel widths
- Wheel Diameters: 6" - 10"



Dual Wheel Solid Pneumatic (7700)

Load Rating (ea.): 2000 - 7500 lbs.

- Tire diameters: 10" - 21"
- More stability due to wider stance
- CNC machined drop forged construction



Super Endurance Kingpinless (ZFSEC)

Load Rating (ea.): 2000 - 5800 lbs.

- 3" wheel widths
- Larger forgings for higher capacity
- 5-1/2" x 7-1/4" mounting plate



Spinfinity® Maxi-Duty Dual (ZFMDD)

Load Rating (ea.): up to 23,000 lbs.

- Move heavy loads @ up to 10 mph
- Wheel diameters: 6" - 16"
- Features new TerraTech® Presson Wheels



Ergo-Tech

Load Rating (ea.): 400 - 1000 lbs.

- 87A poly half-round/donut tread
- Ergonomist favorite
- Maintenance-free bearings



Duralast®

Load Rating (ea.): 475 - 9000 lbs.

- Our classic 95A liquid cast poly
- Heavy duty cast iron core
- Popular general purpose poly



UltraGlide® 24/7 | AGV

Load Rating (ea.): 750 - 6500 lbs.

- Cool running 95A poly
- Higher capacity multi-wheel
- Integrated precision ball bearing



UltraGlide® Ergo

Load Rating (ea.): 600 - 2800 lbs.

- Soft 85A poly on aluminum core
- High capacity multi-wheel
- Minimizes scrubbing effect



DuraGlide®

Load Rating (ea.): 575 - 15,500 lbs.

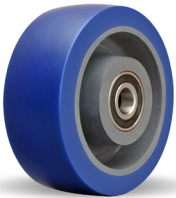
- Higher speed and/or outdoor use
- Heavy duty cast iron & forged steel centers
- Ultra thick poly tread



Duralast® XC

Load Rating (ea.): 975 - 4550 lbs.

- XC for 30% more eXtra Capacity
- 1" thick 70D poly tread rolls easy
- Virtually indestructible forged steel



ErgoGlide®

Load Rating (ea.): 550 - 3800 lbs.

- Quiet riding 82A poly
- Heavy duty cast iron core
- Repels foreign objects & debris



TerraTech® Ultra

Load Rating (ea.): 3400 - 40,400 lbs.

- Ideal for continuous (24/7) operations
- CNC machined face reduces vibration at higher speeds
- Best choice for outdoor applications



Solid Pneumatic

Load Rating (ea.): 1000 - 4200 lbs.

- Higher capacity than pneumatics
- Heavy duty and puncture proof
- For ground support applications



TerraTech® Rubber

Load Rating (ea.): Up to 22,400 lbs.

- For speeds up to 10 mph
- 67(A) max cushion
- Ideal for outdoor applications



Scan to learn how Hamilton's casters and wheels drive progress in the energy sector.

