

Heavy Manufacturing

Load Rating (ea.): 3000 - 40,000 lbs.

When it comes to the world's heaviest, grittiest industries and applications, no caster and wheel manufacturer has the technical know-how like Hamilton. We bring more than 100 years of expertise and a range that includes the highest capacity and largest casters on the planet.

Industries & Applications:

- Heavy fabrication
- Heavy material handling
- Energy - oil & gas
- Aerospace & defense
- Steel, mining, aggregate
- Transportation & Construction



Maxi-Duty

Load Rating (ea.): 3200 - 23,000 lbs.

- Our flagship series
- HPI Swivel Technology
- Wheel Diameters: 6" - 16"



Maxi-Duty Dual

Load Rating (ea.): 4500 - 15,600 lbs.

- Lower height, more capacity
- HPI Swivel Technology
- Built on MD platform



Ultra Maxi-Duty

Load Rating (ea.): 17,600 - 40,000 lbs.

- The heaviest of the heavy
- HPI Ultimate Swivel Technology
- Wheel Diameters: 8" - 36"



Enhanced Precision Super Duty

Load Rating (ea.): 2200 - 10,000 lbs.

- Excellent proportions & balance
- HPI Swivel Technology
- Wheel Diameters: 6" - 12"



Extra Heavy Duty

Load Rating (ea.): 1600 - 5000 lbs.

- CNC machined raceways
- Twelve wheel types offered
- Wheel Diameters: 6" - 12"



Super Endurance Kingpinless (ZFSEC)

Load Rating (ea.): 2000 - 6000 lbs.

- 3" wheel widths
- Larger forgings for higher capacity
- 5-1/2" x 7-1/4" mounting plate



Forged Steel

Load Rating (ea.): 1400 - 23,000 lbs.

- Highest capacity wheel offered
- Virtually indestructible
- Clear coat finish



Nylast®

Load Rating (ea.): 2000 - 10,000 lbs.

- Heavy duty cast nylon
- Highest capacity in category
- Viable alternative to steel



Superlast® XC

Load Rating (ea.): 4400 - 7800 lbs.

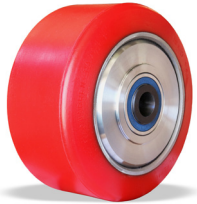
- XC for 30% more Xtra Capacity
- 1" thick 70D poly tread rolls easy
- Virtually indestructible forged steel



UltraGlide®XC

Load Rating (ea.): 1000 - 7800 lbs.

- Hard 70D poly tread
- XC for 25% Xtra Capacity
- Minimizes scrubbing effect



TerraTech® Standard

Load Rating (ea.): 1700 - 34,000 lbs.

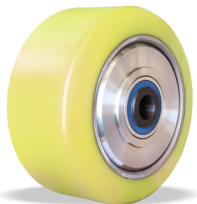
- For speeds up to 10 mph
- Higher load capacities
- Ideal for outdoor applications



TerraTech® Rubber

Load Rating (ea.): 1700 - 22,800 lbs.

- 67A Soft tread for max cushion
- Ideal for outdoor applications
- Maintenance-free Bearing



TerraTech® Ultra

Load Rating (ea.): 1800 - 39,700 lbs.

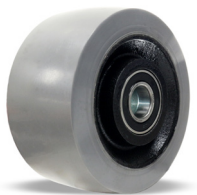
- For speeds up to 10 mph
- Higher load capacities
- Ideal for continuous duty (24/7) operations



Solid Pneumatic

Load Rating (ea.): 1000 - 4200 lbs.

- Higher capacity than pneumatics
- Heavy duty and puncture proof
- For ground support applications



DuraGlide®

Load Rating (ea.): 500 - 15,500 lbs.

- Higher speed and/or outdoor use
- Ultra thick poly tread
- Heavy duty cast iron & forged steel centers



Duralast®

Load Rating (ea.): Up to 9000 lbs.

- Popular general purpose poly
- 3/8" thick classic poly tread
- Heavy duty cast iron center



Scan to learn how Hamilton's casters and wheels support the heavy manufacturing industry.

