

High Heat

Load Rating (ea.): 240 – 9000 lbs.
Temperature Range: -40°F – 750°F

Hamilton's line of high-heat casters and wheels are specially formulated for the harshest applications. Roll them in blistering temperature environments.

Industries & Applications:

- Food manufacturing
- Pharmaceutical
- Bakeries
- Coating/finishing systems
- Research labs & clean rooms
- Autoclaves & heat treating



Inferno Light Duty

Load Rating (ea.): 260 - 800 lbs.

- 2-1/2" x 3-5/8" mounting plate
- Capacity up to 800 lbs.
- Kingpinless design



Inferno Stainless

Load Rating (ea.): 225 - 800 lbs.

- High heat, corrosive & washdown apps
- High-lustre finish for easy cleaning
- Ideal for bakeries/oven racks



Inferno Heavy Duty

Load Rating (ea.): 520 - 1500 lbs.

- Mounting plate 4" x 4-1/2"
- Kingpinless design
- Steel or stainless frames



MagmaMax Extra Heavy Duty

Load Rating (ea.): 400 - 2560 lbs.

- All forged steel swivel construction
- Wheel Diameters: 4" - 8"
- Kingpinless design



MagmaMax Super Duty

Load Rating (ea.): 1000 - 9000 lbs.

- Our toughest high heat casters
- Larger forgings for higher capacity
- Wheel Diameters: 6" - 12"



Scorcher®

Load Rating (ea.): 600 - 1400 lbs.
Temp. Rating: -40°F - 550°F

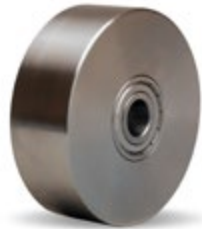
- Non-marking general duty
- Resistant to most solvents
- 30% glass fiber reinforced nylon



Duratherm

Load Rating (ea.): 560 - 670 lbs.
Temp. Rating: -40°F - 530°F

- High gloss smooth finish
- FDA compliant for use in food industry
- Special synthetic compound molded under high pressure



Inferno Stainless Steel

Load Rating (ea.): 315 - 1500 lbs.
Temp. Rating: -22°F - 750°F

- 303 Stainless Steel
- High heat corrosion resistance
- Wheel Diameters: 3" - 8"



Inferno Forged Steel

Load Rating (ea.): 560 - 7000 lbs.
Temp. Rating: -22°F - 750°F

- Highest capacity rating
- For most abusive high heat environments
- Wheel Diameters: 4" - 12"



Inferno Metallic

Load Rating (ea.): 110 - 1040 lbs.
Temp. Rating: -22°F - 750°F

- Cast Iron
- Silver high heat spray enamel
- Wheel Diameters: 3" - 10"



Noiseless Ultratherm®

Load Rating (ea.): 260 lbs.
Temp. Rating: -40°F - 572°F

- Quiet rolling, non-marking
- High heat 72A elastic rubber
- 4" Wheel Diameter w/high heat stainless precision ball bearing



Custom Solutions

When boilerplate won't do, Hamilton designs and builds custom casters and wheels to conquer the heaviest, grittiest, and most complex jobs.

Check out XC0481, a 7000 lb. capacity high heat caster built on our existing Maxi-Duty Series rig with high heat stainless steel shielded precision ball bearings, add an easy to use cam style brake, swivel lock and toe guard, creating a solution to a customers problem.



Scan to learn how Hamilton's high heat casters and wheels keep manufacturers hot and ready.

